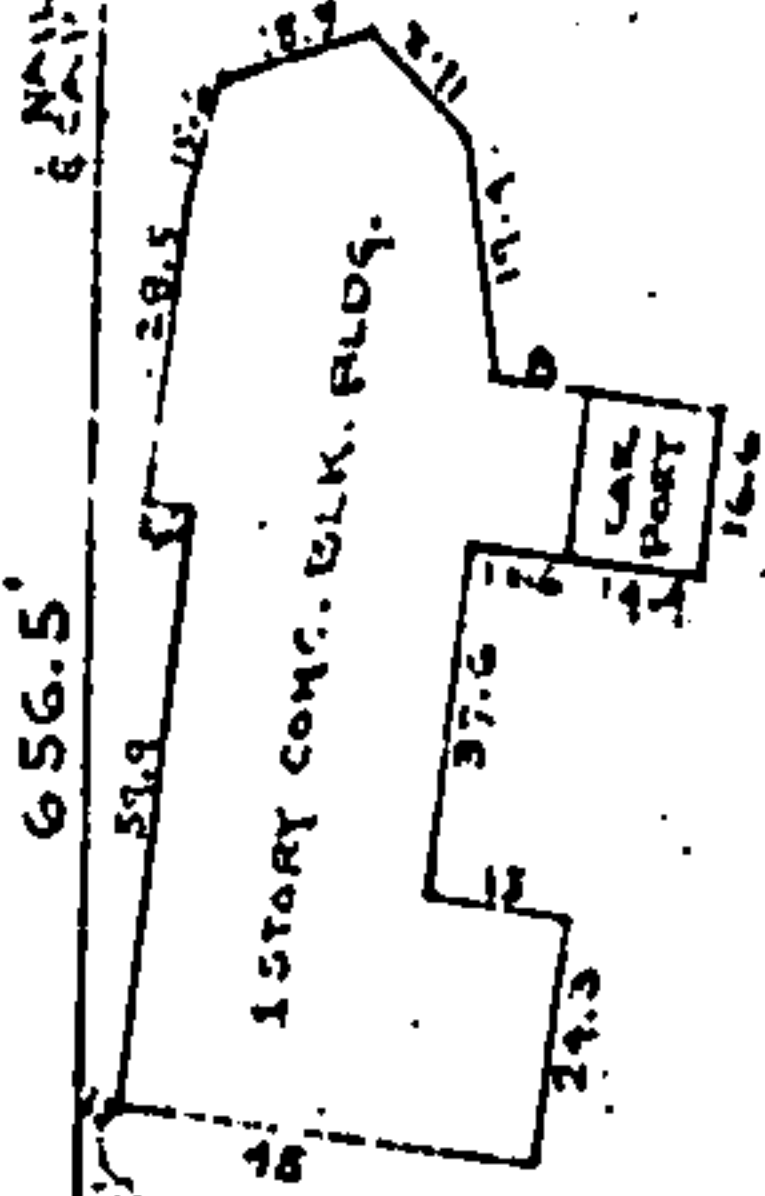




TO NEW BERN U.S. HWY. No. 70

BACK OF CURB N 19° 51' W 104.55'



656.5'

709.91'

COURSES & DISTANCES TO CENTER LINE OF A. & H. O. R. R.:

N 21° 38' W	105'
N 23° 34' W	100'
N 27° 19' W	100'
N 27° 51' W	200'
N 31° 23' W	200'
N 31° 02' W	200'
N 51° 15' W	330.1'

CENTRAL REVIS

WARRELL

N 86° 50' W

S 86° 50' E

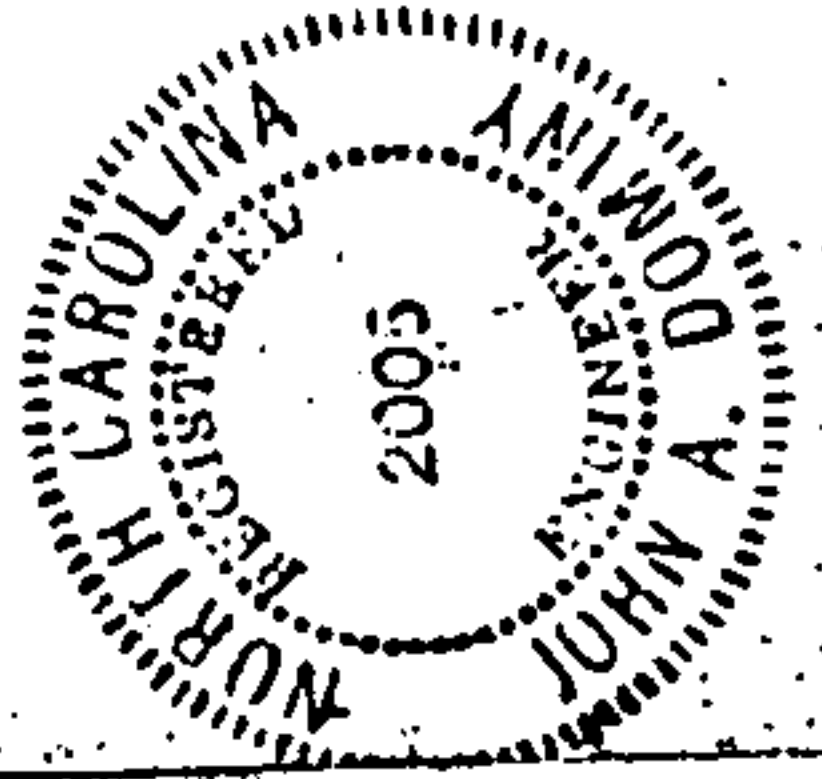
510° 35' W 97.02'

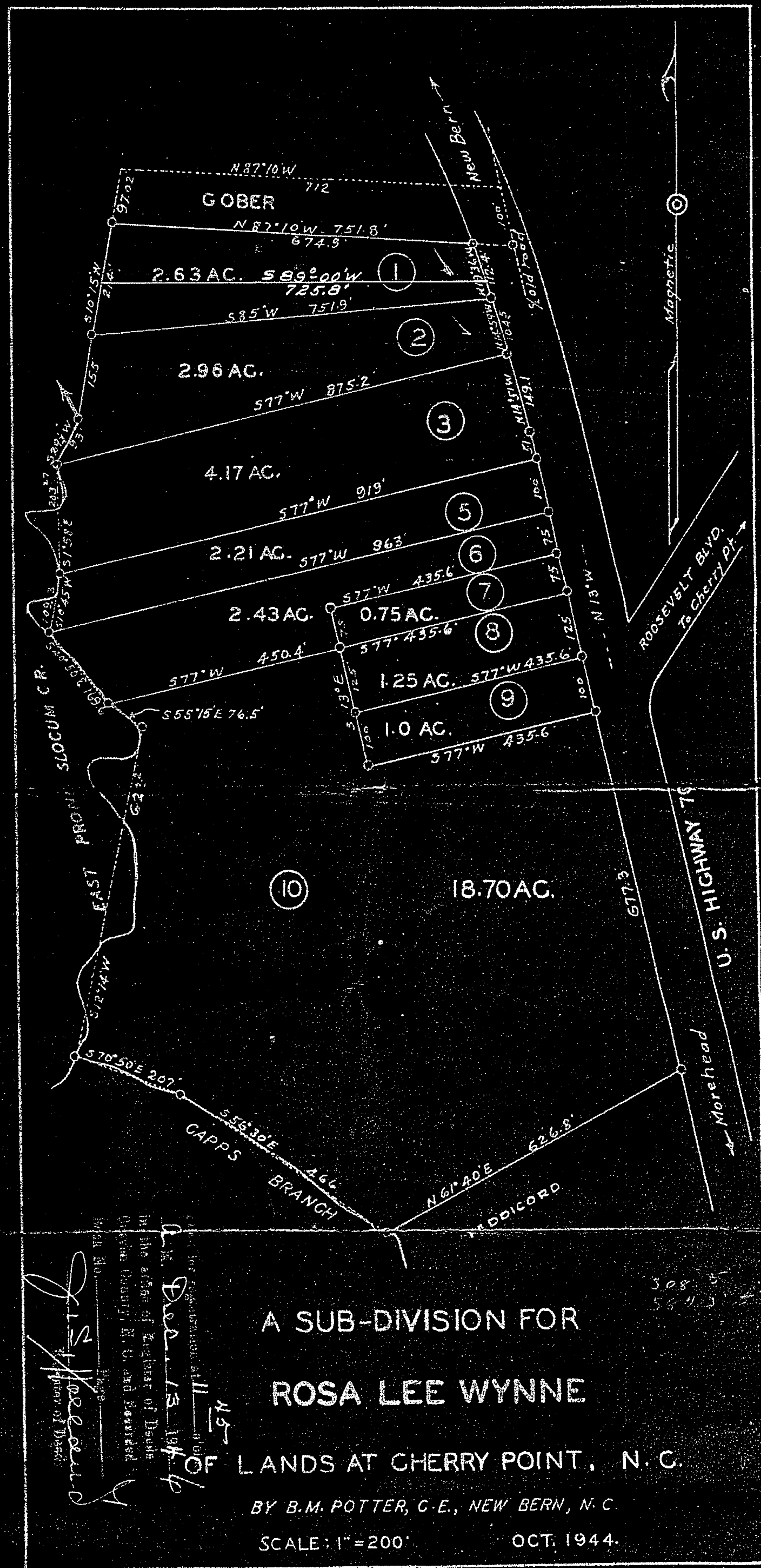
SURVEY FOR
 PAUL MICHAEL CORNET & AUDREY JEAN CORNET
 No. 6 TWP. HAVELOCK CRAVEN CO. N.C.

JULY 30, 1914

SCALE: 1" = 50'

JOHN A. DOMINY
 CIVIL ENGINEER
 411 HAYWOOD CREEK DR.
 NEW BERN, N. C., 28560





John H. ...
 I, the undersigned, being duly sworn, depose and say that the above is a true and correct copy of the original as the same appears in the office of the Register of Deeds in New Bern, N. C. and recorded there on the 11th day of October, 1944.
 J. H. ...
 Register of Deeds

A SUB-DIVISION FOR
ROSA LEE WYNNE

OF LANDS AT CHERRY POINT, N. C.

BY B.M. POTTER, C.E., NEW BERN, N. C.

SCALE: 1"=200' OCT. 1944.

308 5
 504 5